

USER MANUAL

SATEL I-LINK PC POINT-TO-MULTIPOINT PROGRAM

1 TABLE OF CONTENTS

1 TABLE OF CONTENTS2

2 GENERAL.....3

2.1 ABOUT SATEL I-LINK PC3

3 SETTINGS.....4

3.1 SATELLINE RADIO MODEM AND SATEL I-LINK 100 CONFIGURATIONS4

4 USING THE PROGRAM5

4.1 START5

4.2 SENDING DIGITAL DATA5

4.3 SENDING ANALOG DATA5

4.4 RECEIVING DATA6

4.5 EDITING6

4.6 SAVE / LOAD8

4.7 CLOSING8

5 INDICATORS9

5.1 ADJUSTABLE SETTINGS9

5.2 BOTTOM BAR.....9

6 FACTORY SETTINGS AND ACCESSORIES10

6.1 ACCESSORIES10

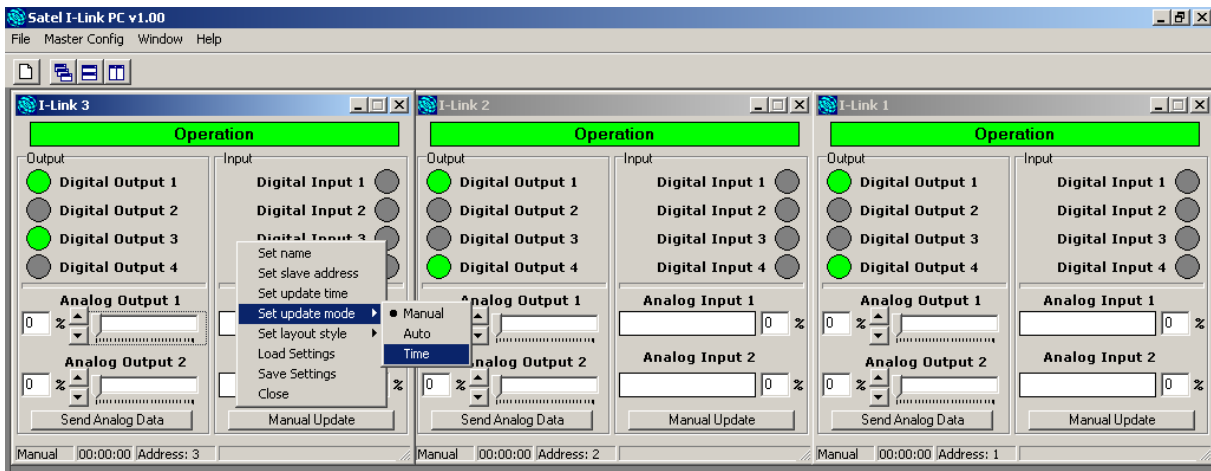
7 CONNECTION EXAMPLE11

2 GENERAL

2.1 ABOUT SATEL I-LINK PC

SATEL I-LINK PC is a Point-to-Multipoint program, that can be used to drive several SATEL I-LINK 100 slaves connected to SATELLINE Radio Modems. The maximum number of slaves is 16. The program makes it possible to operate systems which are connected to the I/O -ports, to change values, monitor the radio link and Multipoint operation etc.

Minimum requirements:
PC 286, SATELLINE RADIO MODEM,
SATEL I-LINK100, I-LINK PC PROGRAM
COM Port baud rate min. 9600 b/sec.
Windows 95, 98, 2000, XP



3 SETTINGS

3.1 SATELLINE RADIO MODEM AND SATEL I-LINK 100 CONFIGURATIONS

BAUD RATE

Set the baud rate of the SATELLINE Radio Modem. Check that the other parameters are "N-8-1".

Set the baud rate of the SATEL I-LINK100 by using the BAUD DIP -switches.

00=2.4, 10=4.8, 01=9.6, 11=19.2 (check that the SATELLINE Radio Modems have the same settings).

PROTOCOL

Set the SATEL I-LINK 100 PRTCL switch to the Multipoint position, P-to-MP.

ADDRESS

Set personal addresses to all SATEL I-LINK 100 sSlaves by using the ADDRESS DIP -switches.

CONNECTIONS



Before connecting the device to a power supply, first connect all inputs and outputs. There is more information about connections at the end of the manual.

4 USING THE PROGRAM

4.1 START

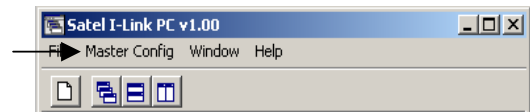
Open the SATEL I-LINK PC program

OPERATION WINDOW

Open a new operation window from the toolbar list by clicking the  -button on the upper left corner, or Open by clicking on the File Menu, opening "New Slave". Open your own window to all slaves. Note that the maximum number of slaves in this program is 16. Arrange the display by using the Windows Menu or the  -buttons.

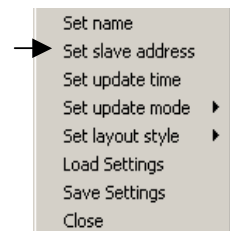
COM PORT

Open the COM- port from the toolbar list by clicking "Master Config" and select "Open ComPort". Set the same parameters as you have set for the SATELLINE Radio Modem and SATEL I-LINK 100, then press OK. If there are no COM -port settings, the program will automatically ask for them.



SLAVE ADDRESS

When the new Slave is opened, the program will automatically set the address for it. To make manual adjustments, click anywhere on the empty table using the right mouse button, and select "Set slave address". Insert the new address, and then press OK.



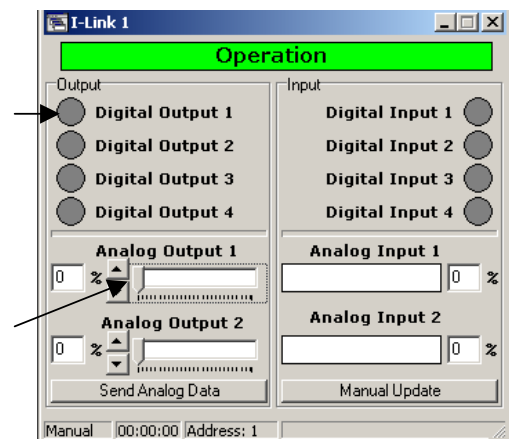
THE BASIC SETTINGS HAVE NOW BEEN ESTABLISHED AND THE SATEL I-LINK PC IS READY TO SEND AND RECEIVE INFORMATION.

4.2 SENDING DIGITAL DATA

To change the slave's digital value, click the grey "Digital Output" circle dot. During the transmission the dot is yellow. When the transmission is done, the circle will change to green. If the transmission fails, the "Operation" signal will turn red.

4.3 SENDING ANALOG DATA

Move the "Analog Output Cursor" or change the number at the side. Press "Send Analog Data" and the levels will be sent to the Slave's "Analog Output". If the transmission fails, the "Operation" signal will turn red. Note that "Analog Output" can only be sent by pressing "Send Analog Data".



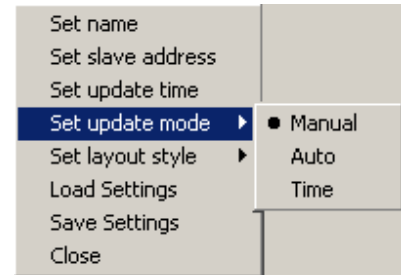
4.4 RECEIVING DATA

There are 3 different modes to receive Data; Manual, Automatic or Time. The settings can be done separately for each window.

Manual

For Manual update – click anywhere on the empty table using the right mouse button - select “Set update mode” , and press “Manual”.

Using this setting, the Slave information for the chosen window is updated only when “Manual Update” circle-dot in this window is pressed.



Automatic

For Automatic update – click anywhere on the empty table using the right mouse button - select “Set update mode”, and press “Auto”.

Using this setting, the slave information for the chosen window is updated with maximum speed.

If only one Slave has an Auto setting, the update speed is about 1 second. Every new Auto setting increases the update time.

NOTE!

Use this setting for the Slaves , if it is absolutely necessary. The Auto setting makes maximal use of the radio frequency. The continuous reservation of radio frequency is not generally recommended.

Time

For a Time based update – click anywhere on the empty table using the right mouse button - select “Set update mode”, and press “Time”, select the time and press SET. The time interval can be from 5 seconds up to ...24 hours.

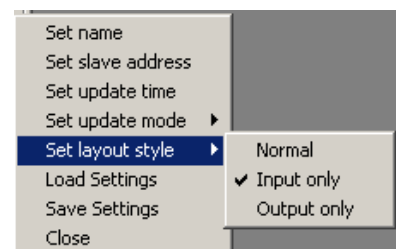


Using this setting, the update information from the slave to the chosen window will be in accordance with the “Select time” setting.

4.5 EDITING

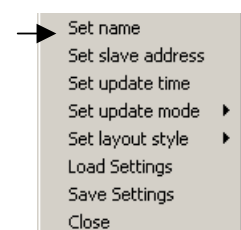
Slave window layout

Click anywhere on the empty table using the right mouse button, select "Set layout style" and set it for “Normal”, “Input only” or “Output only”. The Inputs and Outputs can be seen in the window simultaneously or separately, depending on the settings.



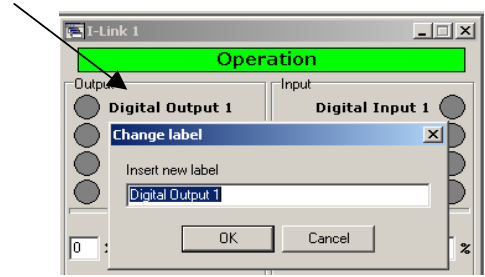
Changing the Slave name

Click anywhere on the empty table using the right mouse button – select "Set Name" – type the new name and press OK.



Changing Input / Output names

Click on the right mouse button on top of the text that you want to edit, make the changes and press ok.

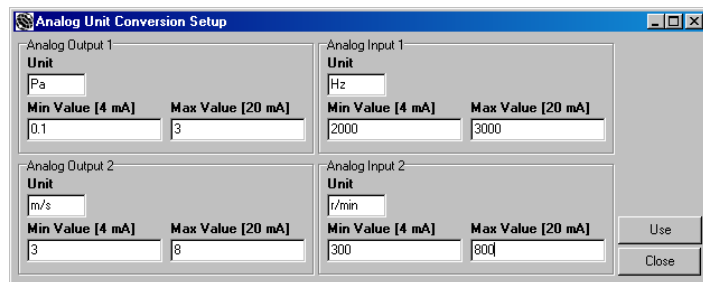
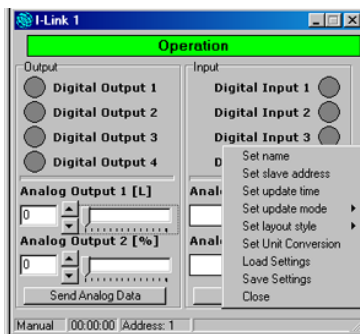


7.9.3 Unit Conversion

Normally the Analog Input and Output Value is shown as % and the scaling is from 0 to 100%.

The % can be changed to any other name that can be maxim 5 characters. The Value can also be re-scaled by setting the minimum and maximum values that the sensor and device applies.

Click anywhere on the empty table of the selected slave using the right mouse button, select "Set Unit Conversion" and click. Set new Values and re-scale the Min and Max Value. Execute the function by clicking Use. A new window



4.6 SAVE / LOAD

Selected Slave settings

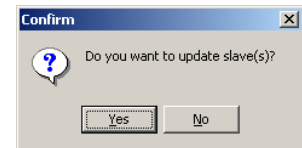
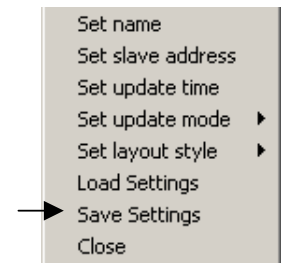
Click anywhere on the empty table of the selected slave using the right mouse button, select "Save Settings" and press OK.

Saving all Slaves

Select FILE - "Save All", select path and save. This function will save all slaves using their current names.

Loading a Slave

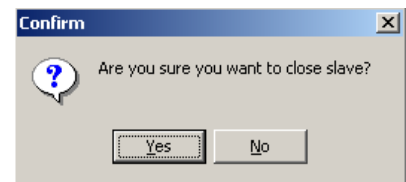
Select FILE - "Load Slave(s)" and open the file. Because the information of the now loaded slave may be different from what it currently is, the program asks "Do you want to update slave(s)? Select Yes / No".



4.7 CLOSING

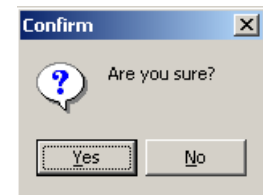
Closing slave

Click anywhere on the empty table of the selected slave using the right mouse button and click "Close". In the event that the program has not been Saved, the program asks "Are you sure you want to close slave? Select Yes / No."



Closing I-LINK PC Program

Select FILE – EXIT. If any of the Slaves are still open, the program asks "Are you sure?" Select Yes /No.



5 INDICATORS

5.1 ADJUSTABLE SETTINGS

Object	Action	Outcome	Outcome
Operation	Status of the operation	Green= OK	Red= Fail
Digital Output	State of the Ooutputs	Green= ON	Grey= OFF
Digital Input	State of the iInputs	Green= ON	Grey= OFF
Analog Output	The output level in %	0=4mA	100= 20mA
Analog Input	The input level in %	Yellow= 0-25%	0 – 4mA
		Green=25-100%	4- 20mA
		Red=100 -125%	20 - 25mA

5.2 BOTTOM BAR

TEXT	Function
Manual or Auto	Shows the Analog Input Update selection
"00:00:00"	Shows the Analog Input Update time
Address:	Shows the Address of the Slave

6 FACTORY SETTINGS and ACCESSORIES

The I-LINK100 I/O converter is shipped with the following default settings (unless specifically ordered with settings other than those listed below):

FIXED SETTINGS DEFINED AT THE TIME OF ORDER		
PRTCL, protocol -switch	P-to-P	=Point-to-point
ADDRESS	0000000	
BAUD	01	= 9.6kb/sec
N.C. "no connection"	000	
TIME	000	= 120 minutes

6.1 ACCESSORIES

BUS CABLES FOR SATEL I-LINK100

CONNECTION	TYPE	RADIO MODEM	CABLE
Point-to-Point	I-link100	Satellite 2ASx, 2ASxE , 3AS-series	TSU
Point-to-Point	I-Link100	Satellite 1870	CRS-18IF
Multipoint	PC	Satellite 2ASx, 2ASxE , 3AS-series	CRS-2F
Multipoint	PC	Satellite 1870	CRS-18F

7 CONNECTION EXAMPLE

