
RADIO MODEM FLASH UPDATE INSTRUCTIONS

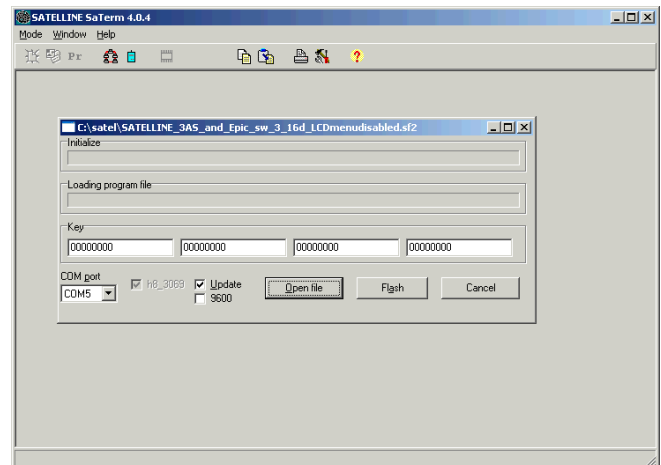
Updating the firmware of Satel radio modems is a simple process, which requires the radio modems to be taken out of operation for several minutes while the update is performed.

Requirements:

- Computer
- RS-232 Serial Cable
- Programming Adapter
- SaTerm Software
- Flash file for Radio Modem

Follow the instructions below to update all Satel radio modem:

1. Remove all antenna and data connections to the radio modem.
2. Attach Programming Adapter (part# YC0200) to radio modem.
3. Connect power to programming adapter.
4. Connect a standard RS-232, 9-pin serial cable between the Programming Adapter and the serial port of any personal, laptop, or notebook computer.
5. Open SaTerm software.
6. Switch Programming Adapter into Programming Mode.
7. Select "Mode" in the upper left corner, and "Flash Update"
8. Confirm the correct COM port is selected.
9. Select "Open File" and browse to correct firmware update.
10. Click "Flash".



It takes less than two minutes to flash one modem, and multiple COM ports may be utilized to update additional modems.

Please contact Satel-West (phone 408-974-1740 or email info@satel-west.com) with any questions or concerns.